

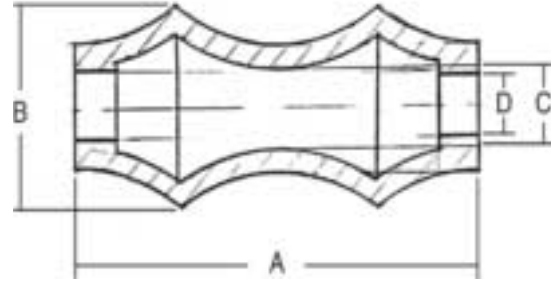
INDUSTRIAL HANGERS & CLAMPS

A 320 Pipe Roller

Material: Cast Iron

Application: Designed for supporting pipe runs with longitudinal movement also a steel rod axle must be used with this pipe roller.

Ordering: Specify figure number and pipe size required.



A 320 PIPE ROLLER

Size	A		B		C		D		Box Qty	
	mm	mm	mm	mm	mm	mm	mm			
1-1/4-1-1/2	32-38	3	76	1-1/4	32	3/4	19	7/16	11	1
2-2-1/2	50-64	3-1/4	83	1-3/8	35	7/8	22	9/16	14	1
3	76	3-7/8	98	1-1/2	38	1	25	9/16	14	1
3-1/2-4	89-102	5	124	1-3/4	45	1	25	21/32	17	1
5	127	5-7/8	150	2	51	1-5/32	29	21/32	17	1
6	152	6-7/8	175	2-1/4	57	1-1/4	32	7/8	21	1
8	203	8-7/8	225	2-5/8	67	1-1/2	38	1	24	1
10	254	11	279	3-3/8	86	1-3/4	45	1	24	1
12	305	12-3/4	324	3-7/8	99	2	51	1	24	1
14	356	14-3/8	365	4-5/8	118	2-3/4	70	1-7/32	31	1
16	406	16-5/32	410	4-3/4	121	2-15/16	75	1-11/32	34	1
18	457	18-1/4	464	5-3/4	146	3-3/4	95	1-11/32	34	1
20	508	20-5/8	524	6	153	3-15/16	100	1-1/2	37	1
24	610	24-3/4	629	7	178	4	102	1-9/16	40	1

