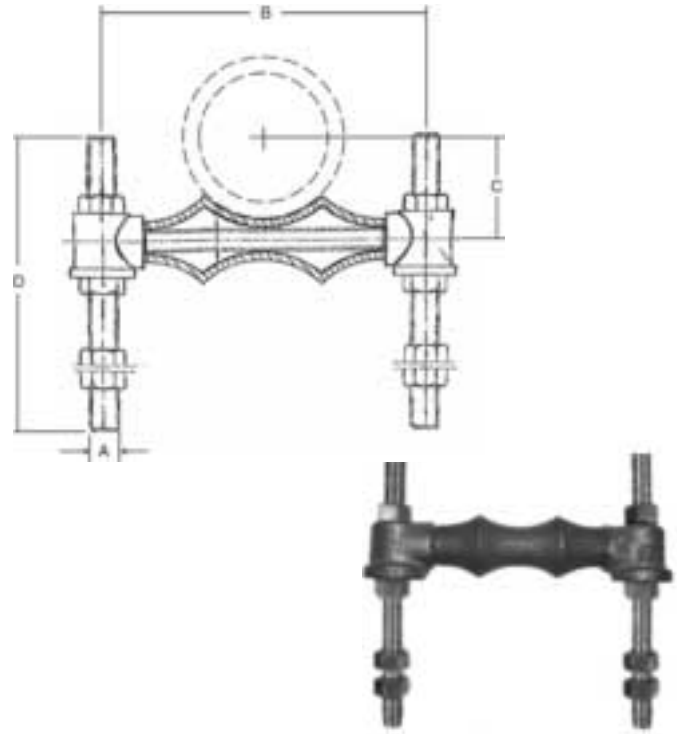


INDUSTRIAL HANGERS & CLAMPS

A 497 Adjustable Pipe Roller Support

- Material:** Steel axle cast iron roller, malleable iron socket ends
- Finish:** Standard finish is bare metal, Zinc plated and hot dipped galvanized are also available.
- Service:** Designed for suspending piping where longitudinal movement and vertical adjustment is required. Threaded rod ordered separately.
- Ordering:** Specify part number, pipe size, insulation thickness and finish.



A 497 ADJUSTABLE PIPE ROLL SUPPORT

Pipe Socket		Socket	A		B		C		D		Max Rec Loads		Box Qty
Size	mm	Size		mm		mm		mm		mm	lbs.	kg	
1	25	#1	3/8	10	4-1/2	114	1-1/16	27	12	305	600	270	1
1-1/4	32	#1	3/8	10	4-1/2	114	1-1/4	32	12	305	600	270	1
1-1/2	38	#1	3/8	10	4-1/2	114	1-3/8	35	12	305	600	270	1
2	50	#2	1/2	13	5-1/4	133	1-5/8	41	12	305	600	270	1
2-1/2	64	#2	1/2	13	5-1/4	133	1-7/8	47	12	305	660	270	1
3	76	#2	1/2	13	5-3/4	146	2-1/8	53	12	305	700	315	1
3-1/2	89	#3	5/8	16	7-3/8	187	2-9/16	65	12	305	750	338	1
4	102	#3	5/8	16	7-3/8	187	2-13/16	71	12	305	750	338	1
5	127	#3	5/8	16	8-3/8	213	3-7/16	87	12	305	750	338	1
6	152	#4	3/4	19	9-1/2	241	4	102	12	305	1070	482	1
8	203	#5	7/8	22	11-7/8	301	5-1/8	130	12	305	1350	608	1
10	254	#5	7/8	22	13-7/8	353	6-3/8	162	12	305	1730	779	1
12	305	#5	7/8	22	15-3/4	400	7-7/16	189	12	305	2400	1080	1
14	356	#6	1	25	17-5/8	448	8-3/8	213	12	305	3130	1409	1
16	406	#7	1	25	20	508	9-3/8	236	18	457	3970	1787	1
18	457	#7	1	25	22	558	10-1/2	558	18	457	4200	1890	1
20	508	#8	1-1/4	32	24-5/8	626	11-5/8	295	18	457	4550	2048	1
24	610	#9	1-1/2	38	29-5/8	752	13-7/8	352	24	610	6160	2800	1

