

## STANDARD & COMMERCIAL PIPE HANGERS

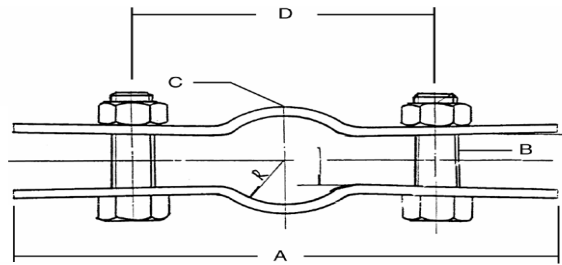
### A 325 C Copper Plated Riser Clamp

Material : Copper Electroplated Carbon Steel.

Application : Designed to support and stabilize vertical runs of copper tubing.

Ordering : Specify figure number and copper tubing size.

Approvals : Complies with Manufacturers Standardization Society SP – 69 Type 8.



### A 325 C COPPER PLATED RISER CLAMP

SIZE	"A"		"B"		"C"		"D"		Max Rec Load	Box Qty	
	mm	mm	mm	mm	mm	mm	mm	mm			
1/2	13	8-1/2	216	5/16	8	1/8"x1	3x25	2-1/2	64	220	25
3/4	19	9-1/4	235	5/16	8	1/8"x1	3x25	2-3/4	70	220	25
1	25	9-1/4	235	5/16	8	1/8"x1	3x25	3-1/4	83	255	20
1-1/4	32	9-1/2	241	5/16	8	5/32x1-1/4	4x30	3-1/2	89	255	20
1-1/2	38	9-1/2	241	3/8	10	5/32x1-1/4	4x30	3-5/8	92	255	20
2	50	10-1/4	260	3/8	10	5/32x1-1/4	4x30	4-3/8	111	300	20
2-1/2	64	11	280	3/8	10	5/32x1-1/4	4x30	5-3/8	137	400	10
3	76	12	305	3/8	10	5/32x1-1/4	4x30	6	152	500	10
4	102	12-1/2	318	3/8	10	5/32x1-1/4	4x30	6-1/2	165	750	10

