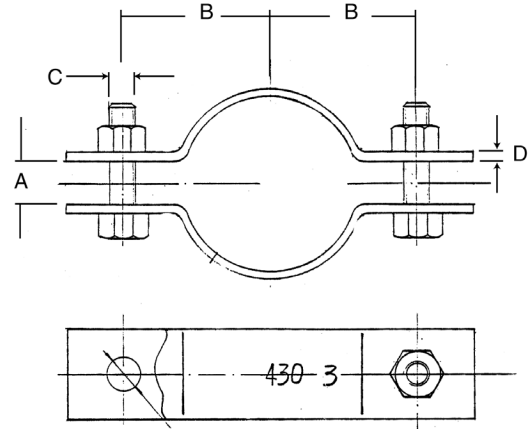


INDUSTRIAL HANGERS & CLAMPS

A 430 Heavy Duty 2-Bolt Pipe Clamp

Material:	Carbon Steel
Application:	Designed for suspending non-insulated heavy duty pipe runs. Also to be used with a weldless eye nut and a welded eye rod.
Ordering:	Specify figure number and pipe size.
Approvals:	Complies with Manufacturers' Standardization Society SP - 69 Type 4.



A 430 HEAVY DUTY 2-BOLT PIPE CLAMP

Size	A		B		C		D		Max Rec Load		Box Qty	
	mm	mm	mm	mm	mm	mm	mm	mm	650°F	750°F		
3	76	1	25	3-1/4	83	3/4	19	1/4x1-1/2	6x38	3,370	3,005	Bulk
4	102	1	25	3-5/8	92	7/8	22	3/8x2	10x50	3,515	3,135	Bulk
5	127	1	25	4-5/8	117	7/8	22	3/8x2-1/2	10x64	3,515	3,135	Bulk
6	152	1	25	5-1/2	140	1	25	1/2x2-1/2	13x64	4,865	4,350	Bulk
8	203	1-1/8	29	7-1/8	181	1	25	1/2x2-1/2	13x64	4,865	4,340	Bulk
10	254	1-1/4	32	7-7/8	200	1-1/4	32	5/8x2-1/2	16x64	6,010	5,360	Bulk
12	305	1-11/16	42	10-1/8	257	1-1/2	38	3/4x3	18x76	8,675	7,740	Bulk
14	356	1-11/16	42	10-1/2	267	1-1/2	38	3/4x4	18x100	9,120	8,135	Bulk
16	406	1-11/16	42	11-5/8	295	1-1/2	38	3/4x4	18x100	9,120	8,135	Bulk
18	457	1-11/16	42	12-3/4	324	1-1/2	38	3/4x6	18x152	13,800	–	Bulk
20	508	1-11/16	42	14-1/4	362	1-1/2	38	1x6	25x152	15,300	–	Bulk
24	610	3-1/4	83	17-1/2	445	2-1/4	57	1x6	25x152	16,300	–	Bulk

