

## FIRE PROTECTION & WATERWORKS HANGERS

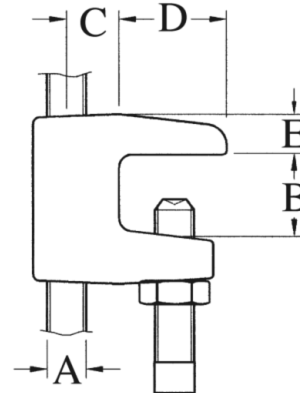
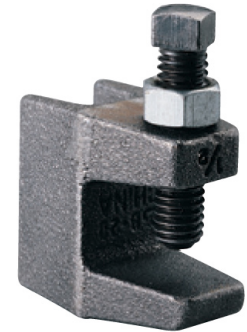
### B 20 Top Beam Clamp - Standard

**Material:** Ductile iron casting with a hardened steel set screw

**Application:** Designed for attaching a hanger rod to the top or bottom flange of a bar joist or other structural shapes where the thickness of the flange does not exceed 5/8".

**Ordering:** Specify figure number and rod size.

**Approvals:** Underwriters' Laboratory Listed and Factory Mutual Approved. Conforms with Manufacturers Standardization Society ANSI/MSS-5P-58 (Type 19 & 23), Install in accordance with ANSI/MSS-5P-69. Exceeds requirements of NFPA-13..



B20



### B 20 TOP BEAM CLAMP - STANDARD

Rod Size		"B"		"C"		"D"		"E"		Max Rec Loads	Box Qty
	mm		mm		mm		mm		mm		
3/8	10	3/4	25	.49	12.5	1	25.4	3/8	9.5	500	75
1/2	13	3/4	25	.49	12.5	1	25.4	3/8	9.5	500	75
5/8	16	1	25	2-3/16	55	1-13/16	46	3/8	10	600	50
3/4	19	1-1/8	28	2-5/16	58	1-13/16	46	1/2	13	800	25

